

Application Scenario

How Process Visualization Works in the Factory

Pain Points of Global Manufacturers

Management of Hundreds of PCs

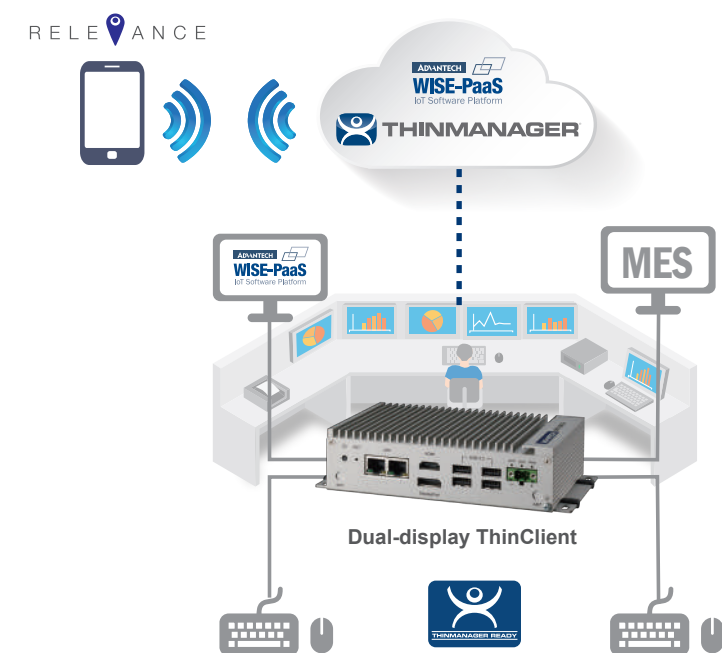
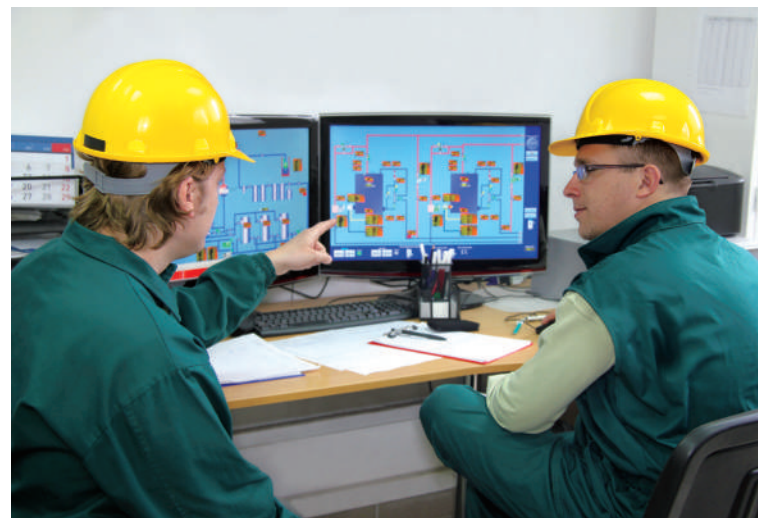
A modern factory typically consists of hundreds of PCs deployed on various applications. However, this can require intensive effort on system maintenance and authority control for so many individual computer systems, so IT managers want a centralized management system to monitor and control all clients.

Limited Performance of Terminal PCs

When applications become more and more complicated, for instance to process massive calculations, or connecting to multiple monitors, it requires higher performance from terminal PCs, but that limits their usage in harsh environments.

Hours to Recover Failed Computers

Computers play an important role in factories due to their power and flexibility. However, production lines go down from time to time and it can take several hours to restore PCs and previous configurations can be lost.



See what will happen...



Boost Productivity with Less Downtime

Save time managing computers and simplify recovery within 2 minutes.



Deliver the Right Content to the Right Person in the Right place

See every client and user operating in the plant and simply set up their administration via a configuration wizard.

Ordering Configuration Table

SRP-FPV240 Centralizing Productivity & Downtime Management

Package Offering

Application Software :
ACP-enabled BIOS for ThinClient x1
Preinstalled ACP-enabled BIOS

System Computing :
UNO-2362G-T2AE x1
AMD® Dual Core T40E Small-Size ThinClient, HDMI*1, DP*1

Optional Configuration

Option 100 WISE-PaaS/SaaS Software

[101] WebAccess/Cloud License (Preliminary)

Qty: ____

Option 400 Add-on Accessories

[401] Power Adaptor (PWR-247-CE)

Qty: ____

Option 200 System Computing

[201] Five-monitor ThinClient (Preliminary)

Qty: ____

[202] 43" FHD Display (Preliminary)

Qty: ____

Remark

Order in 3 Easy Steps

Go Online Store



Step 1: Login

Add to Cart



Step 2: Configuration

Confirm Order



Step 3: Check & Submit

ADVANTECH

Enabling an Intelligent Planet

Advantech Headquarters

No. 1, Alley 20, Lane 26, Rueiguang Road, Neihu District, Taipei, Taiwan 11491
Tel: 886-2-2792-7818 Fax: 886-2-2794-7301
www.advantech.com

US/Canada: 1-888-576-9668
Europe: 00800-2426-8080/8081
China: 800-810-0345/8389
Taiwan: 800-777-1111
Japan: 0800-500-1055
Korea: 080-363-9494/9495

Singapore: +65-6442-1000
Malaysia: 1800-88-1809
Australia: 1300-308-531
Thailand: 66-2-248-3140
Indonesia: +62-21-7511939
Mexico: 1-800-467-2415



SRP-FPV240
Online Catalog

iFactory

Solution
Ready
Platform

Process Visualization Solution

Enhancing Productivity & Reducing Downtime by
Central Management

SRP-FPV240



- ✓ All Client Device Management
- ✓ Remote Control & Maintenance
- ✓ Plug & Play Diskless ThinClient

ADVANTECH

Enabling an Intelligent Planet

ADVANTECH
WISE-PaaS
IoT Software Platform



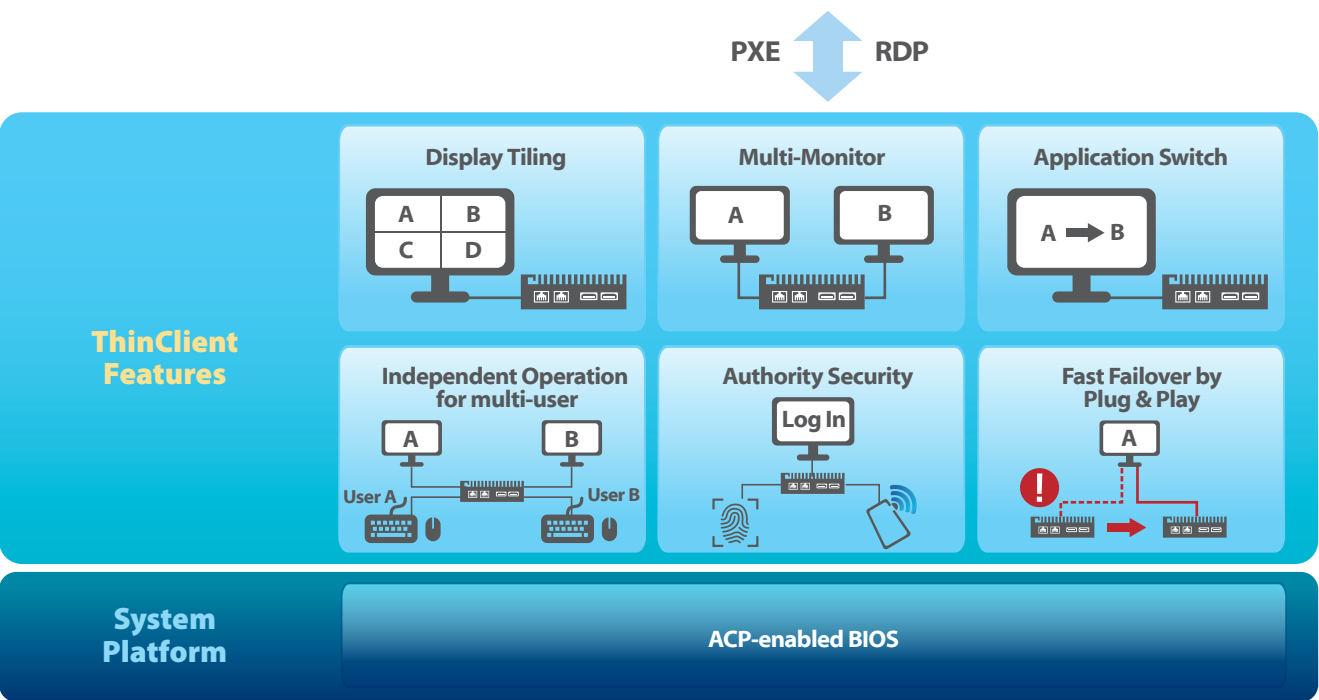
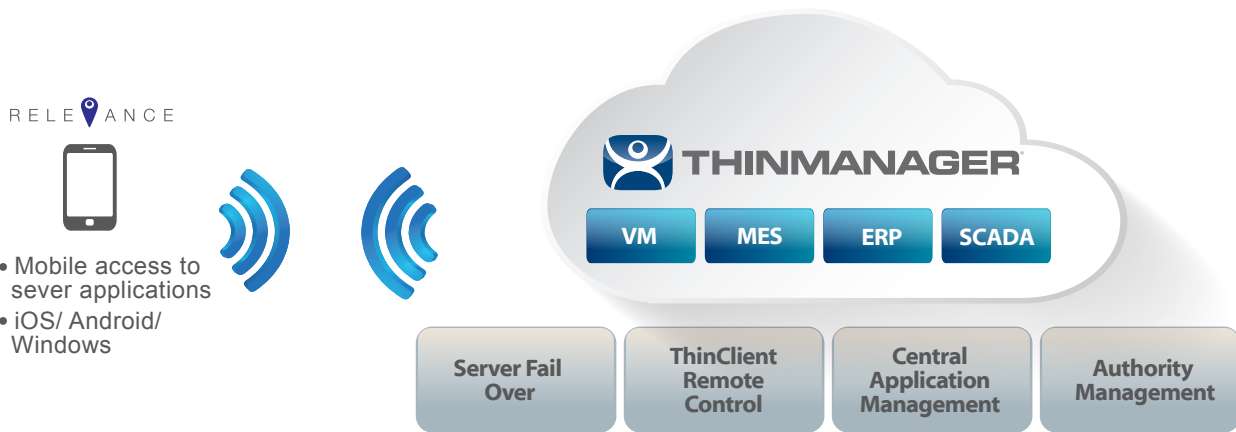
More on SRP-FPV240 website

Entering a New Era of Smart Manufacturing

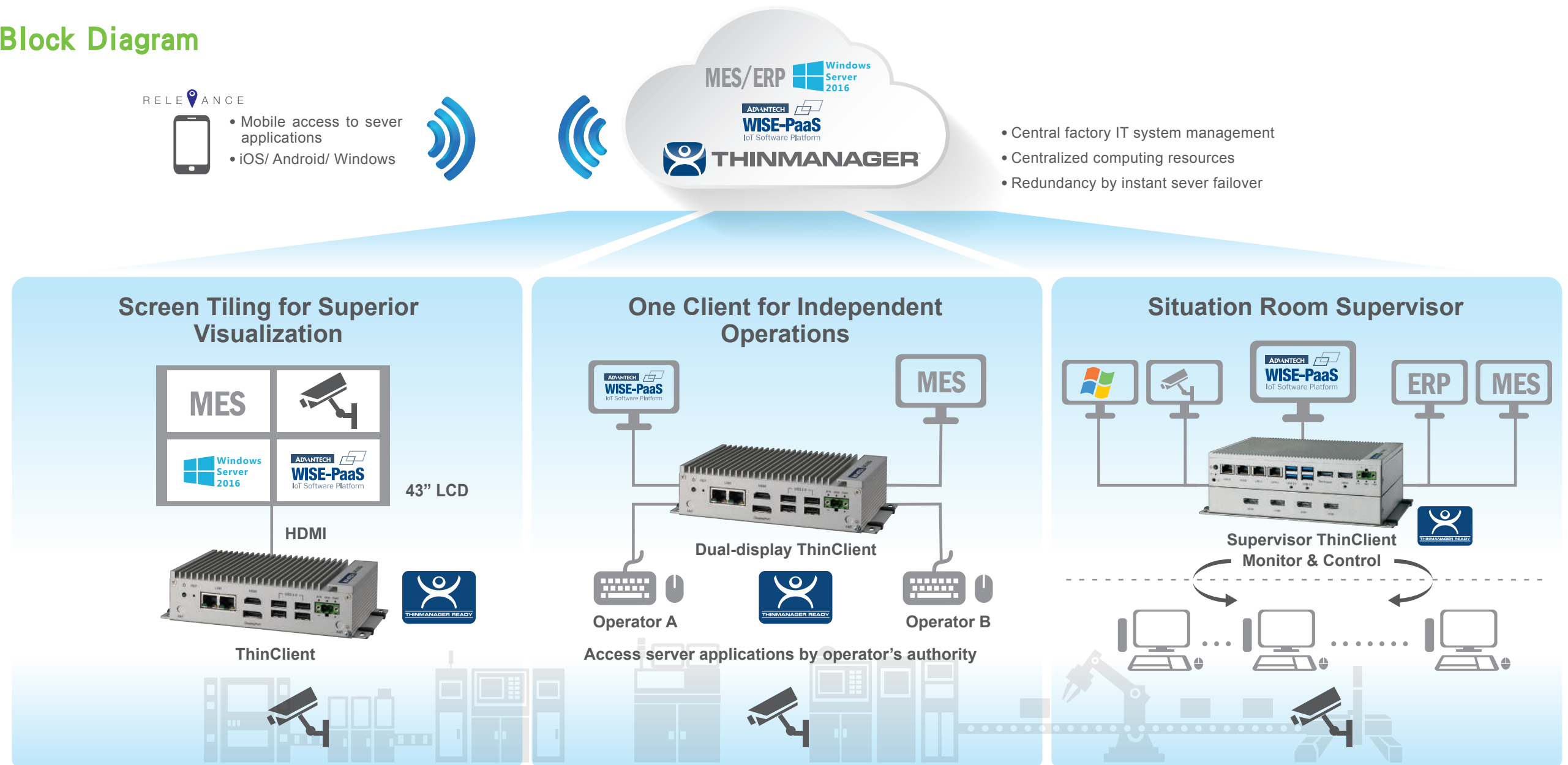
Introducing SRP-FPV240 Solution for Centralizing Productivity and Downtime Management

This Solution Ready Platform allows users to easily manage all server applications and thin clients from the plant floor to the control room on a single user interface. Users can decide which client/user to access and what content to be displayed. SRP-FPV240 thin client also presents superior visualization via multi-monitor, multi-session and flexible screen tiling functions, especially suitable for multi-tasking. SRP-FPV240 diskless industrial thin client features high reliability in any automated environment to greatly reduce extra costs from unexpected downtime. SRP-FPV240 supports fast failover by plugging it in a backup unit.

Software Architecture and Key Design Features



System Block Diagram

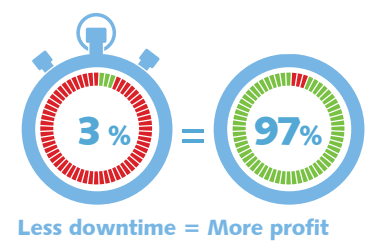
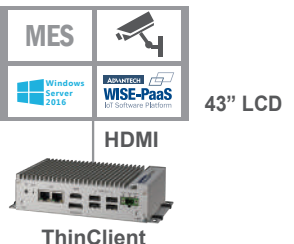
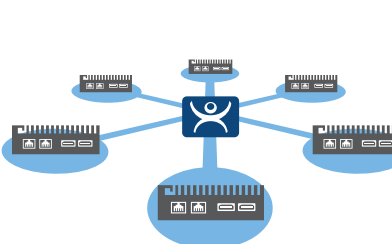


Key Advantages/ Features

Centralized Applications & Client Management
Manage all server applications and the ThinClients from the plant floor to control room on a single user interface. Users can decide which client/ user to access and what content to be displayed.

Supports Superior Visualization for Multi-tasking
ThinClients present superior visualization by virtual screening such as multi-monitor, multi-session and flexible screen tiling functions; especially useful for multi-tasking scenarios.

Easy Maintenance of ThinClient with Less Downtime
Diskless industrial ThinClients feature high reliability in any automated environment, which greatly reduces the extra cost from unexpected downtimes.



Solution-Ready-Platform Package

ACP ThinManager Ready Client
Preinstalled ACP-enabled ThinClient BIOS

UNO-2362G-T2AE
AMD® Dual Core T40E Small-Size Automation Computer, 2GB RAM, HDMI/ DisplayPort

