

# Botego

This flexible ABS enclosure system creates an individual design by using various standard components

- 4 basic sizes
- For horizontal or vertical use
- 3 standard heights
- Other heights available by using extension sets
- Design with or without air vents
- Locking of the enclosure parts; also screwable (option)
- Design elements and caps in 6 colours
- Angled front
- Front/rear panel, aluminium, plug-in and screwable
- Good stackability
- Flat wall mounting possible
- Comprehensive range of accessories



<b>Colour</b>	Light grey, similar to RAL 7035; special colours on request
<b>Protection class</b>	Plain: IP 40/DIN EN 60529; with air vents: IP 30/DIN EN 60529
<b>Enclosure material</b>	ABS; for details see technical data

The enclosure height (or width for vertical use) can be extended by using 15.24 mm grid extension sets (3 HP). Bosses for self-tapping screws are provided in the enclosure shells. The boss diameters correspond to – among others – Euro card formats. The enclosures contain additional slots for boards, mounting plates, etc. Ventilation can be changed by turning the half shells: Air vents are mounted directly over each other and allow optimal ventilation of components which are especially heat-intensive. If the vents are displaced in respect of each other, the entire interior of the enclosure is ventilated diagonally. Special 19“ subracks can be fitted. The set of filling profiles (accessories) is used to close the

space above and below the subrack. Standard part front panels can be fitted using the TF profile set. The enclosure system is equipped as standard with robust snap-lock technology, so the half-shells can be assembled quickly without tools. If more than one extension set is used, and for especially heavy equipment, the enclosure parts can be screwed in with the set of screws (optional accessory). The caps (please order separately) are available in 4 different application designs, each in 6 colours. Colour-matched design elements (accessories) give the enclosure an individual look.



# Botego BO 320.. (L)



## Enclosure, plain

Model	Order no.	A	B	C	c1	Note
BO 32006	68320060	174	196,9	49,96	31,28	6 HP
BO 32009	68320090	174	196,9	65,2	46,52	9 HP
BO 32012	68320120	174	196,9	80,44	61,76	12 HP

Scope of delivery: 2 half-shells

Note: See following pages for accessories.  
Caps are not included in the scope of delivery.

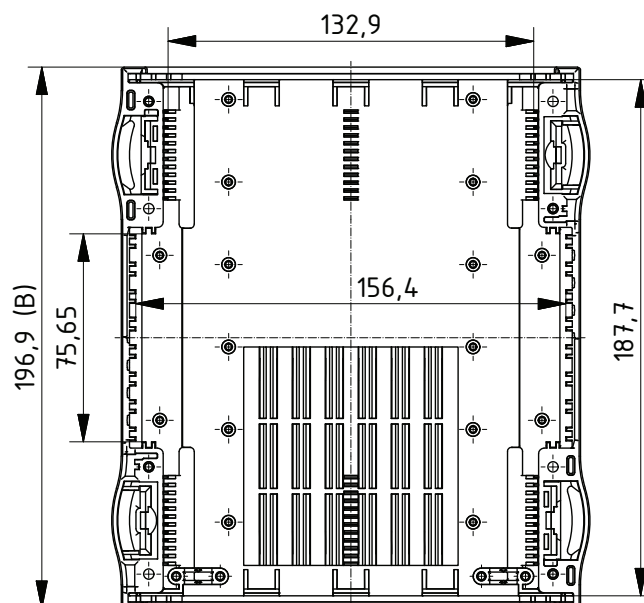
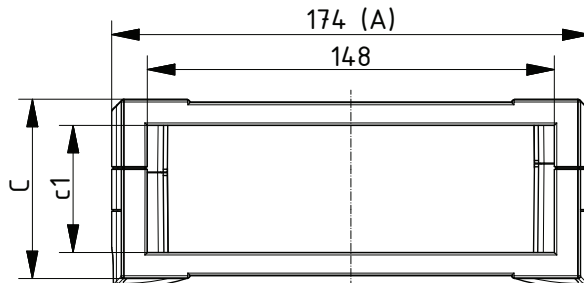


## Enclosure with air vents

Model	Order no.	A	B	C	c1	Note
BO 32006 L	68320061	174	196,9	49,96	31,28	6 HP
BO 32009 L	68320091	174	196,9	65,2	46,52	9 HP
BO 32012 L	68320121	174	196,9	80,44	61,76	12 HP

Scope of delivery: 2 half-shells

Note: See following pages for accessories.  
Caps are not included in the scope of delivery.



Z-2803193

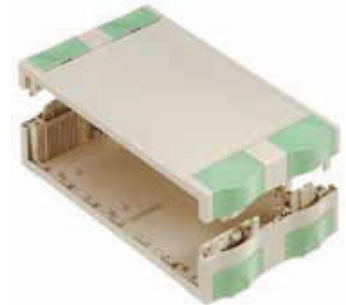
# Botego BO 514.. (L)

## Enclosure, plain

Model	Order no.	A	B	C	c1	Note
BO 51406	68514060	240,675	136,9	49,96	31,28	6 HP
BO 51409	68514090	240,675	136,9	65,2	46,52	9 HP
BO 51412	68514120	240,675	136,9	80,44	61,76	12 HP

Scope of delivery: 2 half-shells

Note: See following pages for accessories.  
Caps are not included in the scope of delivery.

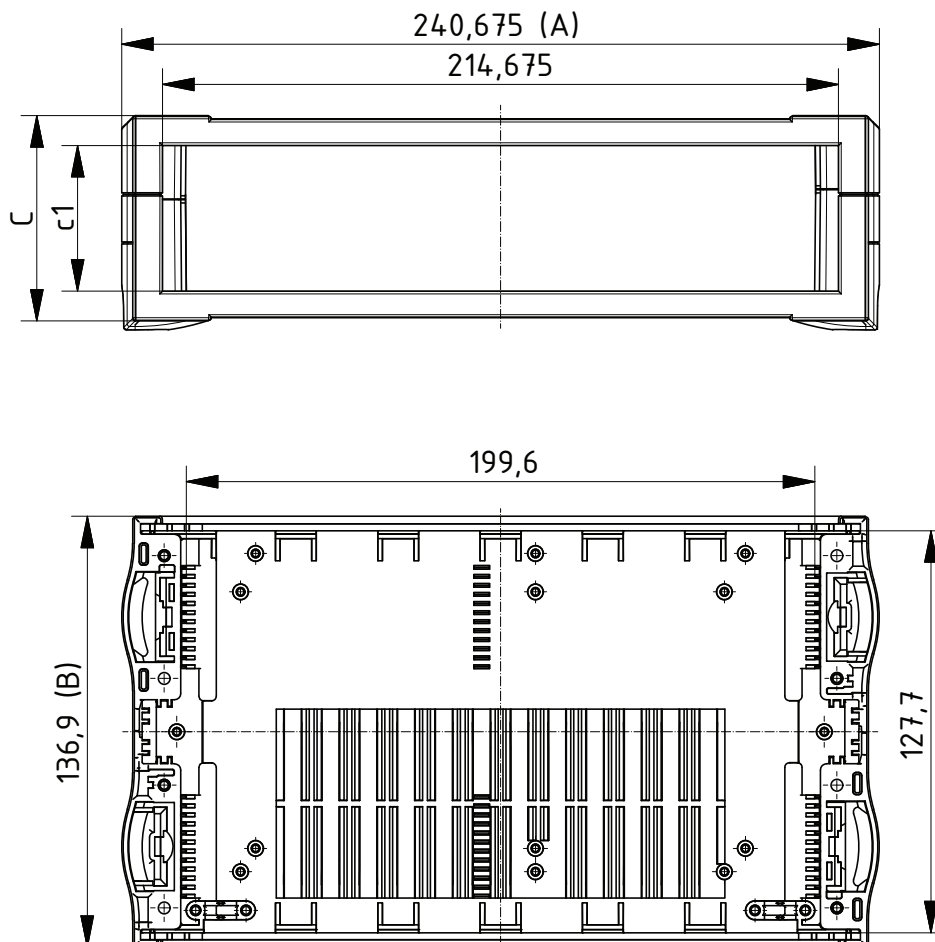
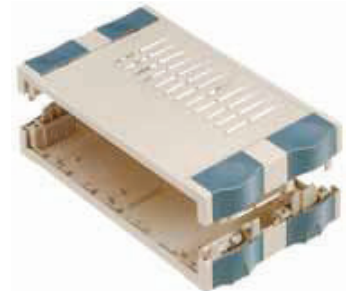


## Enclosure with air vents

Model	Order no.	A	B	C	c1	Note
BO 51406 L	68514061	240,675	136,9	49,96	31,28	6 HP
BO 51409 L	68514091	240,675	136,9	65,2	46,52	9 HP
BO 51412 L	68514121	240,675	136,9	80,44	61,76	12 HP

Scope of delivery: 2 half-shells

Note: See following pages for accessories.  
Caps are not included in the scope of delivery.



# Botego BO 520.. (L)



### Enclosure, plain

Model	Order no.	A	B	C	c1	Note
BO 52006	68520060	240,675	196,9	49,96	31,28	6 HP
BO 52009	68520090	240,675	196,9	65,2	46,52	9 HP
BO 52012	68520120	240,675	196,9	80,44	61,76	12 HP

Scope of delivery: 2 half-shells

Note: See following pages for accessories.  
Caps are not included in the scope of delivery.

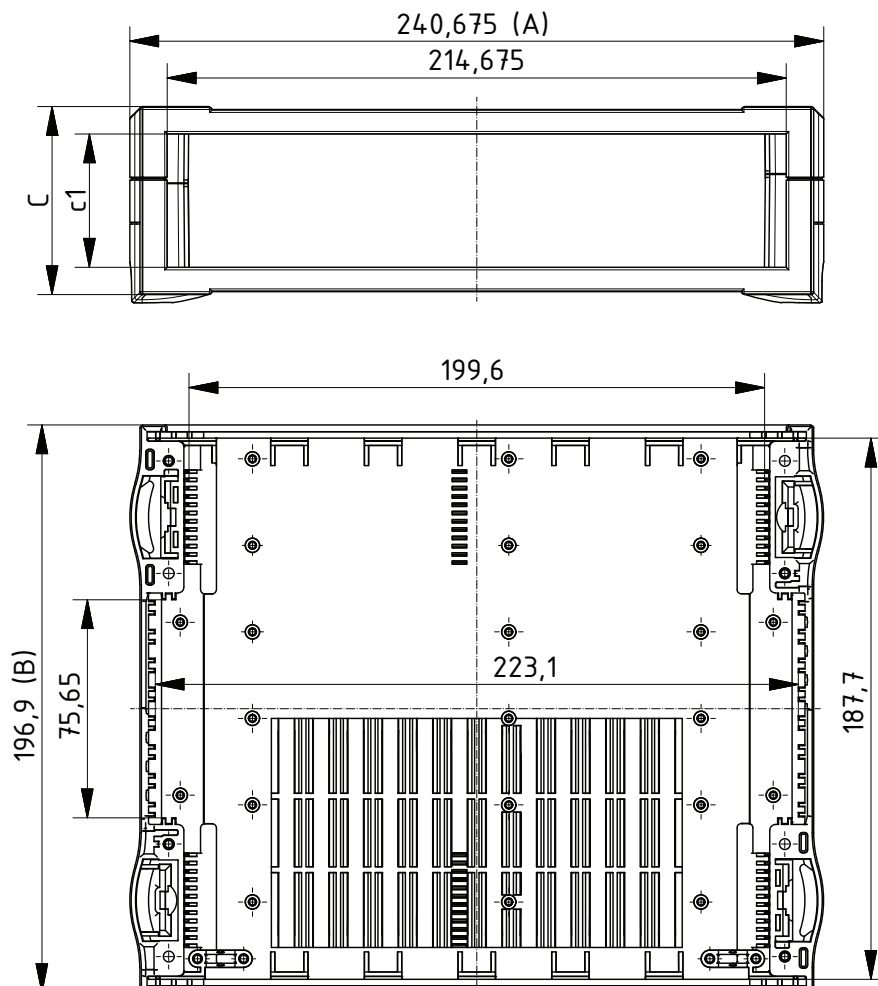


### Enclosure with air vents

Model	Order no.	A	B	C	c1	Note
BO 52006 L	68520061	240,675	196,9	49,96	31,28	6 HP
BO 52009 L	68520091	240,675	196,9	65,2	46,52	9 HP
BO 52012 L	68520121	240,675	196,9	80,44	61,76	12 HP

Scope of delivery: 2 half-shells

Note: See following pages for accessories.  
Caps are not included in the scope of delivery.



Z-2803195

# Botego BO 626.. (L)

## Enclosure, plain

Model	Order no.	A	B	C	c1	Note
BO 62606	68626060	307,35	256,9	49,96	31,28	6 HP
BO 62609	68626090	307,35	256,9	65,2	46,52	9 HP
BO 62612	68626120	307,35	256,9	80,44	61,76	12 HP

Scope of delivery: 2 half-shells

Note: See following pages for accessories.

Caps are not included in the scope of delivery.



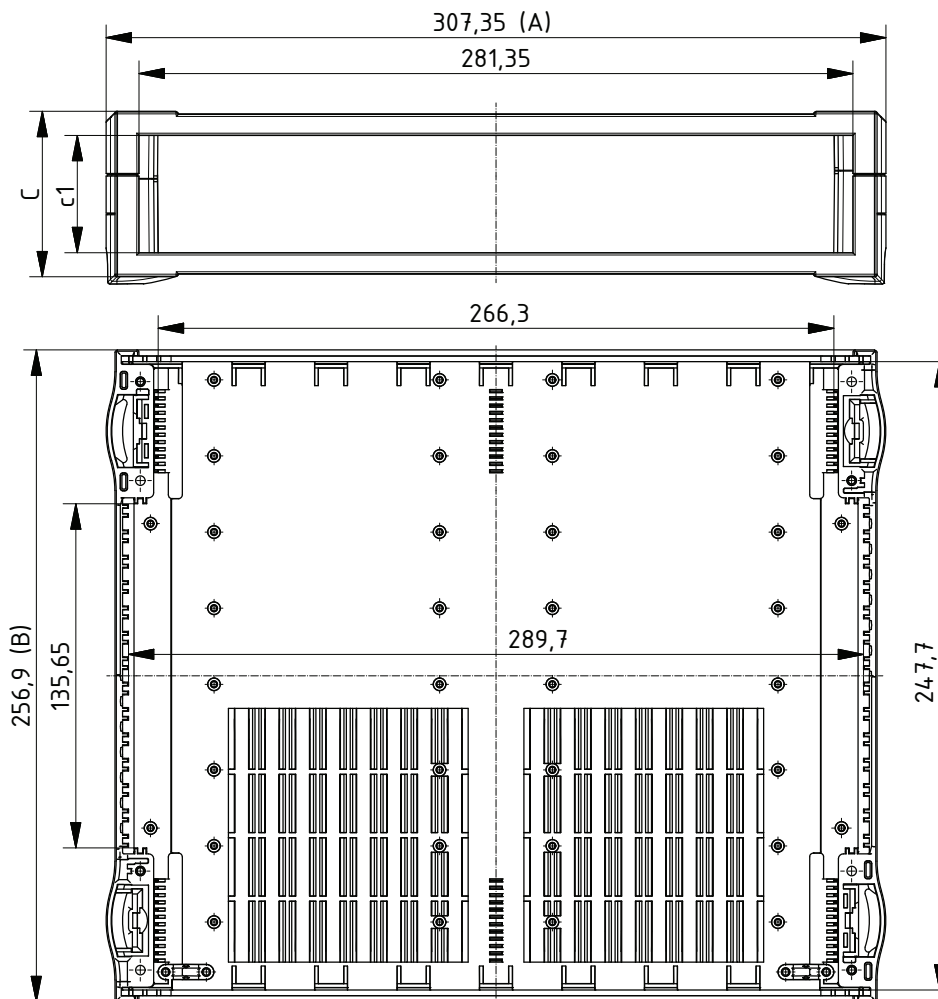
## Enclosure with air vents

Model	Order no.	A	B	C	c1	Note
BO 62606 L	68626061	307,35	256,9	49,96	31,28	6 HP
BO 62609 L	68626091	307,35	256,9	65,2	46,52	9 HP
BO 62612 L	68626121	307,35	256,9	80,44	61,76	12 HP

Scope of delivery: 2 half-shells

Note: See following pages for accessories.

Caps are not included in the scope of delivery.



Z-2803196

# Accessories Botego



## Cap set 1 for use as desktop enclosure

Model	Order no.	Colour
BO-KS 1-7035	68011000	Light grey
BO-KS 1-6027	68012000	Light green
BO-KS 1-7024	68013000	Graphite grey
BO-KS 1-5014	68014000	Dove blue
BO-KS 1-5002	68015000	Ultramarine
BO-KS 1-I0788	68016000	Green translucent

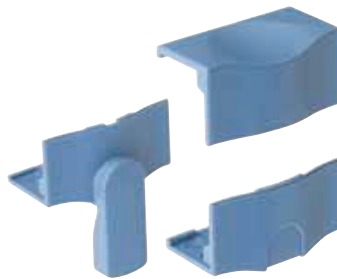
Scope of delivery: 4 upper caps, 4 lower caps, 4 rubber feet



## Cap set 2 for optimal stackability

Model	Order no.	Colour
BO-KS 2-7035	68021000	Light grey
BO-KS 2-6027	68022000	Light green
BO-KS 2-7024	68023000	Graphite grey
BO-KS 2-5014	68024000	Dove blue
BO-KS 2-5002	68025000	Ultramarine
BO-KS 2-I0788	68026000	Green translucent

Scope of delivery: 8 lower caps, 4 rubber feet



## Cap set 3 with collapsible tip-up foot

Model	Order no.	Colour
BO-KS 3-7035	68031000	Light grey
BO-KS 3-6027	68032000	Light green
BO-KS 3-7024	68033000	Graphite grey
BO-KS 3-5014	68034000	Dove blue
BO-KS 3-5002	68035000	Ultramarine
BO-KS 3-I0788	68036000	Green translucent

Scope of delivery: 4 upper caps, 2 lower caps, 2 foot caps with collapsible feet, 2 rubber feet



## Cap set 4 for wall mounting

Model	Order no.	Colour
BO-KS 4-7035	68041000	Light grey
BO-KS 4-6027	68042000	Light green
BO-KS 4-7024	68043000	Graphite grey
BO-KS 4-5014	68044000	Dove blue
BO-KS 4-5002	68045000	Ultramarine
BO-KS 4-I0788	68046000	Green translucent

Scope of delivery: 4 upper caps, 4 wall-fixing caps, 4 rubber feet

# Accessories Botego

## Extension sets, 9 HP, plain and with air vents (L)

Model	Order no.	Note
BO AB 02009-7035	68200910	For BO 320..(L), for BO 520..(L)
BO AB 02009 L-7035	68200911	For BO 320..(L), for BO 520..(L)
BO AB 02609-7035	68260910	For BO 626..(L)
BO AB 02609 L-7035	68260911	For BO 626..(L)

Scope of delivery: 2 extension parts

Note: L = With injection-moulded air vents



## Front panels, natural-coloured anodised aluminium

Model	Order no.	Note
BO FP 30006	68711306	For BO 32006 (L)
BO FP 30009	68711309	For BO 32009 (L)
BO FP 30012	68711312	For BO 32012 (L)
BO FP 30015	68711315	For BO 32006 (L) + 1x AB 02009 (L)
BO FP 30018	68711318	For BO 32009 (L) + 1x AB 02009 (L)
BO FP 30021	68711321	For BO 32012 (L) + 1x AB 02009 (L)
BO FP 30024	68711324	For BO 32006 (L) + 2x AB 02009 (L)
BO FP 30027	68711327	For BO 32009 (L) + 2x AB 02009 (L)
BO FP 30030	68711330	For BO 32012 (L) + 2x AB 02009 (L)
BO FP 30033	68711333	For BO 32006 (L) + 3x AB 02009 (L)
BO FP 30036	68711336	For BO 32009 (L) + 3x AB 02009 (L)
BO FP 30039	68711339	For BO 32012 (L) + 3x AB 02009 (L)
BO FP 30042	68711342	For BO 32006 (L) + 4x AB 02009 (L)
BO FP 30045	68711345	For BO 32009 (L) + 4x AB 02009 (L)
BO FP 30048	68711348	For BO 32012 (L) + 4x AB 02009 (L)
BO FP 50006	68711506	For BO 51406 (L); for BO 52006 (L)
BO FP 50009	68711509	For BO 51409 (L); for BO 52009 (L)
BO FP 50012	68711512	For BO 51412 (L); for BO 52012 (L)
BO FP 50015	68711515	For BO 52006 (L) + 1x AB 02009 (L)
BO FP 50018	68711518	For BO 52009 (L) + 1x AB 02009 (L)
BO FP 50021	68711521	For BO 52012 (L) + 1x AB 02009 (L)
BO FP 50024	68711524	For BO 52006 (L) + 2x AB 02009 (L)
BO FP 50027	68711527	For BO 52009 (L) + 2x AB 02009 (L)
BO FP 50030	68711530	For BO 52012 (L) + 2x AB 02009 (L)
BO FP 50033	68711533	For BO 52006 (L) + 3x AB 02009 (L)
BO FP 50036	68711536	For BO 52009 (L) + 3x AB 02009 (L)
BO FP 50039	68711539	For BO 52012 (L) + 3x AB 02009 (L)
BO FP 50042	68711542	For BO 52006 (L) + 4x AB 02009 (L)
BO FP 50045	68711545	For BO 52009 (L) + 4x AB 02009 (L)
BO FP 50048	68711548	For BO 52012 (L) + 4x AB 02009 (L)
BO FP 60006	68711606	For BO 62606 (L)
BO FP 60009	68711609	For BO 62609 (L)
BO FP 60012	68711612	For BO 62612 (L)
BO FP 60015	68711615	For BO 62606 (L) + 1x AB 02609 (L)
BO FP 60018	68711618	For BO 62609 (L) + 1x AB 02609 (L)
BO FP 60021	68711621	For BO 62612 (L) + 1x AB 02609 (L)
BO FP 60024	68711624	For BO 62606 (L) + 2x AB 02609 (L)
BO FP 60027	68711627	For BO 62609 (L) + 2x AB 02609 (L)
BO FP 60030	68711630	For BO 62612 (L) + 2x AB 02609 (L)



# Accessories Botego



## Front panels, natural-coloured anodised aluminium

Model	Order no.	Note
BO FP 60033	68711633	For BO 62606 (L) + 3x AB 02609 (L)
BO FP 60036	68711636	For BO 62609 (L) + 3x AB 02609 (L)
BO FP 60039	68711639	For BO 62612 (L) + 3x AB 02609 (L)
BO FP 60042	68711642	For BO 62606 (L) + 4x AB 02609 (L)
BO FP 60045	68711645	For BO 62609 (L) + 4x AB 02609 (L)
BO FP 60048	68711648	For BO 62612 (L) + 4x AB 02609 (L)

Scope of delivery: 1 front panel

Note: Plastic front panels on request.



## Angled operating front, 18 HP

Model	Order no.	Note
BO-SF-3 001800	68018003	For BO 32009 (L) + 1x BO AB 02009 (L)
BO-SF-5 001800	68018005	For BO 52009 (L) + 1x BO AB 02009 (L)
BO-SF-6 001800	68018006	For BO 62609 (L) + 1x BO AB 02609 (L)

Scope of delivery: 1 angled operating front



## Handle

Model	Order no.	Note
BO HS 30000	68430000	For BO 320... (L)
BO HS 50000	68450000	For BO 514... (L); for BO 520... (L)
BO HS 60000	68460000	For BO 626... (L)

Scope of delivery: 1 handle, fixing material



## Cable strain-relief set

Model	Order no.
BO-ZE	68900040

Scope of delivery: 10 strain relief brackets, 20 screws

## Set of screws

Model	Order no.
BO-SHR Z KA35x10	68900030

Scope of delivery: 40 screws

# Accessories Botego

## Design element set 2

Model	Order no.	Colour	Note
BO-D2-6TE-7035	68120610*	Light grey	For BO FP..06
BO-D2-6TE-6027	68120620*	Light green	For BO FP..06
BO-D2-6TE-7024	68120630*	Graphite grey	For BO FP..06
BO-D2-6TE-5014	68120640*	Dove blue	For BO FP..06
BO-D2-6TE-5002	68120650*	Ultramarine	For BO FP..06
BO-D2-6TE-10788	68120660*	Green translucent	For BO FP..06
BO-D2-9TE-7035	68120910*	Light grey	For BO FP..09
BO-D2-9TE-6027	68120920	Light green	For BO FP..09
BO-D2-9TE-7024	68120930*	Graphite grey	For BO FP..09
BO-D2-9TE-5014	68120940*	Dove blue	For BO FP..09
BO-D2-9TE-5002	68120950	Ultramarine	For BO FP..09
BO-D2-9TE-10788	68120960	Green translucent	For BO FP..09
BO-D2-12TE-7035	68121210*	Light grey	For BO FP..12
BO-D2-12TE-6027	68121220*	Light green	For BO FP..12
BO-D2-12TE-7024	68121230*	Graphite grey	For BO FP..12
BO-D2-12TE-5014	68121240*	Dove blue	For BO FP..12
BO-D2-12TE-5002	68121250*	Ultramarine	For BO FP..12
BO-D2-12TE-10788	68121260*	Green translucent	For BO FP..12
BO-D2-15TE-7035	68121510*	Light grey	For BO FP..15
BO-D2-15TE-6027	68121520	Light green	For BO FP..15
BO-D2-15TE-7024	68121530*	Graphite grey	For BO FP..15
BO-D2-15TE-5014	68121540	Dove blue	For BO FP..15
BO-D2-15TE-5002	68121550	Ultramarine	For BO FP..15
BO-D2-15TE-10788	68121560	Green translucent	For BO FP..15
BO-D2-18TE-7035	68121810*	Light grey	For BO FP..18
BO-D2-18TE-6027	68121820	Light green	For BO FP..18
BO-D2-18TE-7024	68121830*	Graphite grey	For BO FP..18
BO-D2-18TE-5014	68121840*	Dove blue	For BO FP..18
BO-D2-18TE-5002	68121850*	Ultramarine	For BO FP..18
BO-D2-18TE-10788	68121860	Green translucent	For BO FP..18

Scope of delivery: 2 design elements, fixing material

Note: \* = Available on request



# Accessories Botego



## Design element set 3

Model	Order no.	Colour	Note
BO-D3-6TE-7035	68130610*	Light grey	For BO FP...06
BO-D3-6TE-6027	68130620*	Light green	For BO FP...06
BO-D3-6TE-7024	68130630*	Graphite grey	For BO FP...06
BO-D3-6TE-5014	68130640*	Dove blue	For BO FP...06
BO-D3-6TE-5002	68130650*	Ultramarine	For BO FP...06
BO-D3-6TE-10788	68130660*	Green translucent	For BO FP...06
BO-D3-9TE-7035	68130910*	Light grey	For BO FP...09
BO-D3-9TE-6027	68130920*	Light green	For BO FP...09
BO-D3-9TE-7024	68130930*	Graphite grey	For BO FP...09
BO-D3-9TE-5014	68130940*	Dove blue	For BO FP...09
BO-D3-9TE-5002	68130950*	Ultramarine	For BO FP...09
BO-D3-9TE-10788	68130960	Green translucent	For BO FP...09
BO-D3-12TE-7035	68131210*	Light grey	For BO FP...12
BO-D3-12TE-6027	68131220*	Light green	For BO FP...12
BO-D3-12TE-7024	68131230*	Graphite grey	For BO FP...12
BO-D3-12TE-5014	68131240*	Dove blue	For BO FP...12
BO-D3-12TE-5002	68131250*	Ultramarine	For BO FP...12
BO-D3-12TE-10788	68131260*	Green translucent	For BO FP...12
BO-D3-15TE-7035	68131510	Light grey	For BO FP...15
BO-D3-15TE-6027	68131520*	Light green	For BO FP...15
BO-D3-15TE-7024	68131530	Graphite grey	For BO FP...15
BO-D3-15TE-5014	68131540*	Dove blue	For BO FP...15
BO-D3-15TE-5002	68131550*	Ultramarine	For BO FP...15
BO-D3-15TE-10788	68131560	Green translucent	For BO FP...15
BO-D3-18TE-7035	68131810*	Light grey	For BO FP...18
BO-D3-18TE-6027	68131820*	Light green	For BO FP...18
BO-D3-18TE-7024	68131830*	Graphite grey	For BO FP...18
BO-D3-18TE-5014	68131840	Dove blue	For BO FP...18
BO-D3-18TE-5002	68131850	Ultramarine	For BO FP...18
BO-D3-18TE-10788	68131860	Green translucent	For BO FP...18

Scope of delivery: 2 design elements, fixing material

Note: \* = Available on request

## Filling profile set for subrack

Model	Order no.	Note
BO-PB1-21	68731210	Enclosure height 24 HP
BO-PB1-42	68731420	Enclosure height 45 HP

Scope of delivery: 1 set = 2 pieces



# Accessories Botego

## Profile set TF

Model	Order no.	Note
BO-PT1-06	68721060	For BO...06
BO-PT1-09	68721090*	For BO...09
BO-PT1-12	68721120*	For BO...12
BO-PT1-15	68721150	For BO...06 + 1 x AB...
BO-PT1-18	68721180*	For BO...09 + 1 x AB...
BO-PT1-21	68721210*	For BO...12 + 1 x AB...
BO-PT1-24	68721240	For BO...06 + 2 x AB...
BO-PT1-27	68721270*	For BO...09 + 2 x AB...
BO-PT1-30	68721300	For BO...12 + 2 x AB...
BO-PT1-33	68721330	For BO...06 + 3 x AB...
BO-PT1-36	68721360	For BO...09 + 3 x AB...
BO-PT1-39	68721390	For BO...12 + 3 x AB...
BO-PT1-42	68721420	For BO...06 + 4 x AB...
BO-PT1-45	68721450	For BO...09 + 4 x AB...
BO-PT1-48	68721480	For BO...12 + 4 x AB...

Scope of delivery: 2 profiles, 2 tapped strips

Note: \* = Available on request

By inserting profiles and tapped stripes between the half-shells/extension sets, a screw-on front panel can be fitted to the enclosure.



## Part front panels, natural-coloured anodised aluminium, passivated on rear

Model	Order no.	Note
TF/M 306	86806033	3 U, 6 HP
TF/M 309	86809033	3 U, 9 HP
TF/M 312	86812033	3 U, 12 HP
TF/M 315	86815033	3 U, 15 HP
TF/M 318	86818033	3 U, 18 HP
TF/M 321	86821033	3 U, 21 HP
TF/M 324	86824033	3 U, 24 HP
TF/M 327	86827033	3 U, 27 HP
TF/M 330	86830033	3 U, 30 HP
TF/M 333	86833033	3 U, 33 HP
TF/M 336	86836033	3 U, 36 HP
TF/M 339	86839033	3 U, 39 HP
TF/M 342	86842033	3 U, 42 HP
TF/M 345	86845033	3 U, 45 HP
TF/M 348	86848033	3 U, 48 HP
TF/M 4.506	86806453	For BO 5...
TF/M 4.509	86809453	For BO 5...
TF/M 4.512	86812453	For BO 5...
TF/M 4.515	86815453	For BO 5...
TF/M 4.518	86818453	For BO 5...
TF/M 4.521	86821453	For BO 5...
TF/M 4.524	86824453	For BO 5...
TF/M 4.527	86827453	For BO 5...
TF/M 4.530	86830453	For BO 5...
TF/M 4.533	86833453	For BO 5...



# Accessories Botego



Part front panels, natural-coloured anodised aluminium, passivated on rear

Model	Order no.	Note
TF/M 4.536	86836453	For BO 5....
TF/M 4.539	86839453	For BO 5....
TF/M 4.542	86842453	For BO 5....
TF/M 4.545	86845453	For BO 5....
TF/M 4.548	86848453	For BO 5....
TF/M 606	86806063	6 U, 6 HP
TF/M 609	86809063	6 U, 9 HP
TF/M 612	86812063	6 U, 12 HP
TF/M 615	86815063	6 U, 15 HP
TF/M 618	86818063	6 U, 18 HP
TF/M 621	86821063	6 U, 21 HP
TF/M 624	86824063	6 U, 24 HP
TF/M 627	86827063	6 U, 27 HP
TF/M 630	86830063	6 U, 30 HP
TF/M 633	86833063	6 U, 33 HP
TF/M 636	86836063	6 U, 36 HP
TF/M 639	86839063	6 U, 39 HP
TF/M 642	86842063	6 U, 42 HP
TF/M 645	86845063	6 U, 45 HP
TF/M 648	86848063	6 U, 48 HP

Scope of delivery: 1 front panel

Note: For screw holder and part front panel screws, see Interzoll Modul accessories



**BOPLA**

A Phoenix Mecano Company

# Application example

## of our comprehensive range of services for Botego!



### **Improvements:**

Special colours, EMC coatings

### **Mechanical processing:**

Milling, drilling, countersinking, thread-cutting, punching

Ultrasonic welding of individual mounting points

### **Mounting work:**

Mounting of membrane keypads and decor foils

### **Gluing work:**

Insertion of supplied components

Wiring

**This is only a small selection  
of our comprehensive range of services,  
with which we manufacture individual  
products of excellent quality.**

For more information, please see the introduction to the catalogue.